

LaGrange County Parks



A guide to LaGrange County Parks



...naturally

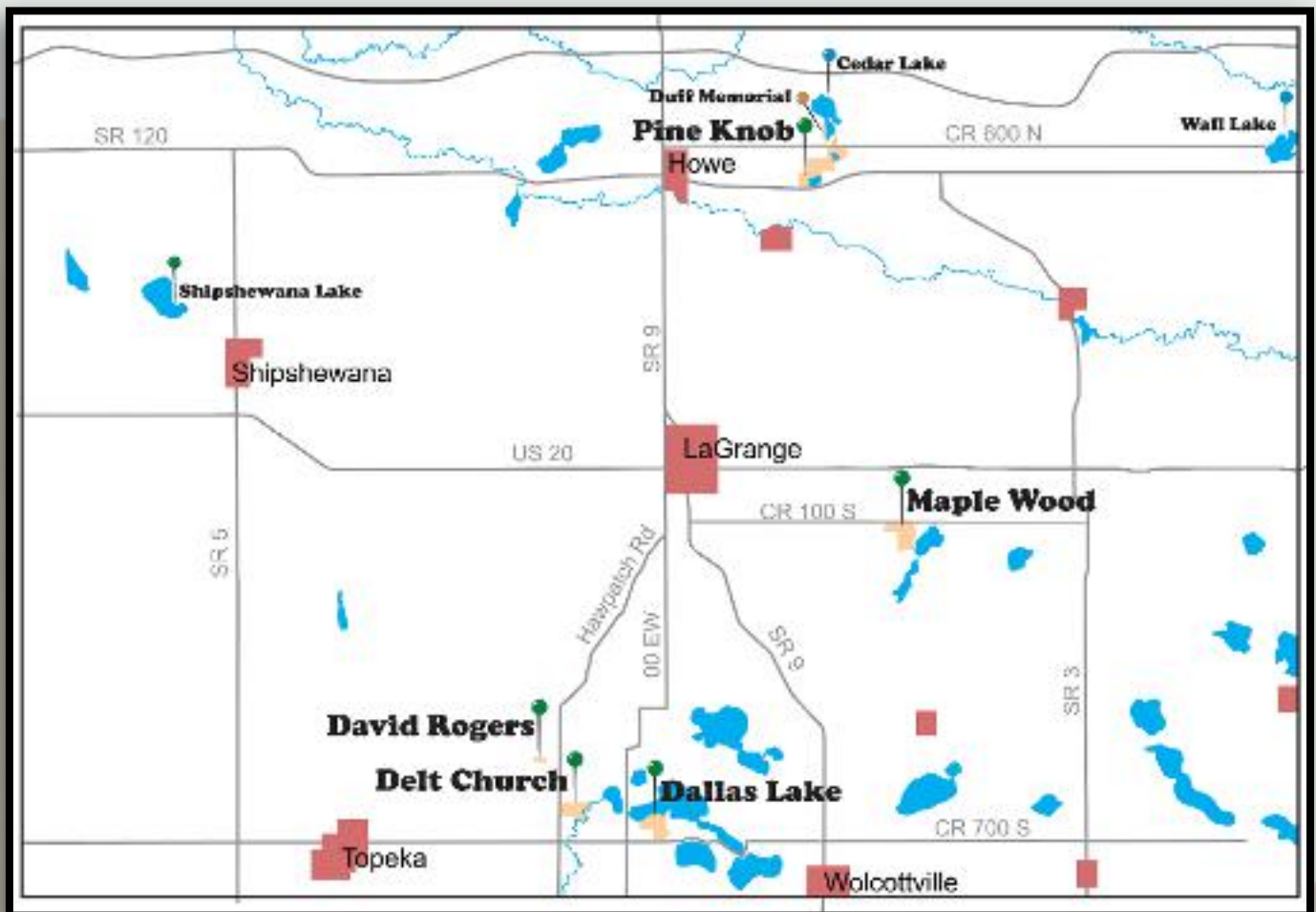
Welcome!

We have many outdoor opportunities for you.

Outdoor recreation, programs, environmental education, & natural areas to enjoy and explore.

Each park has distinct character and natural communities.

Visit often with family and friends!



712

The number of public park acres managed by the Parks & Recreation Department.

400

The number of natural area acres, including two dedicated State Nature Preserves and other natural, restored areas, protected by the Parks & Recreation Department.

Dallas Lake Park & Pond Lil



0505 W 700 S Wolcottville
141 acres

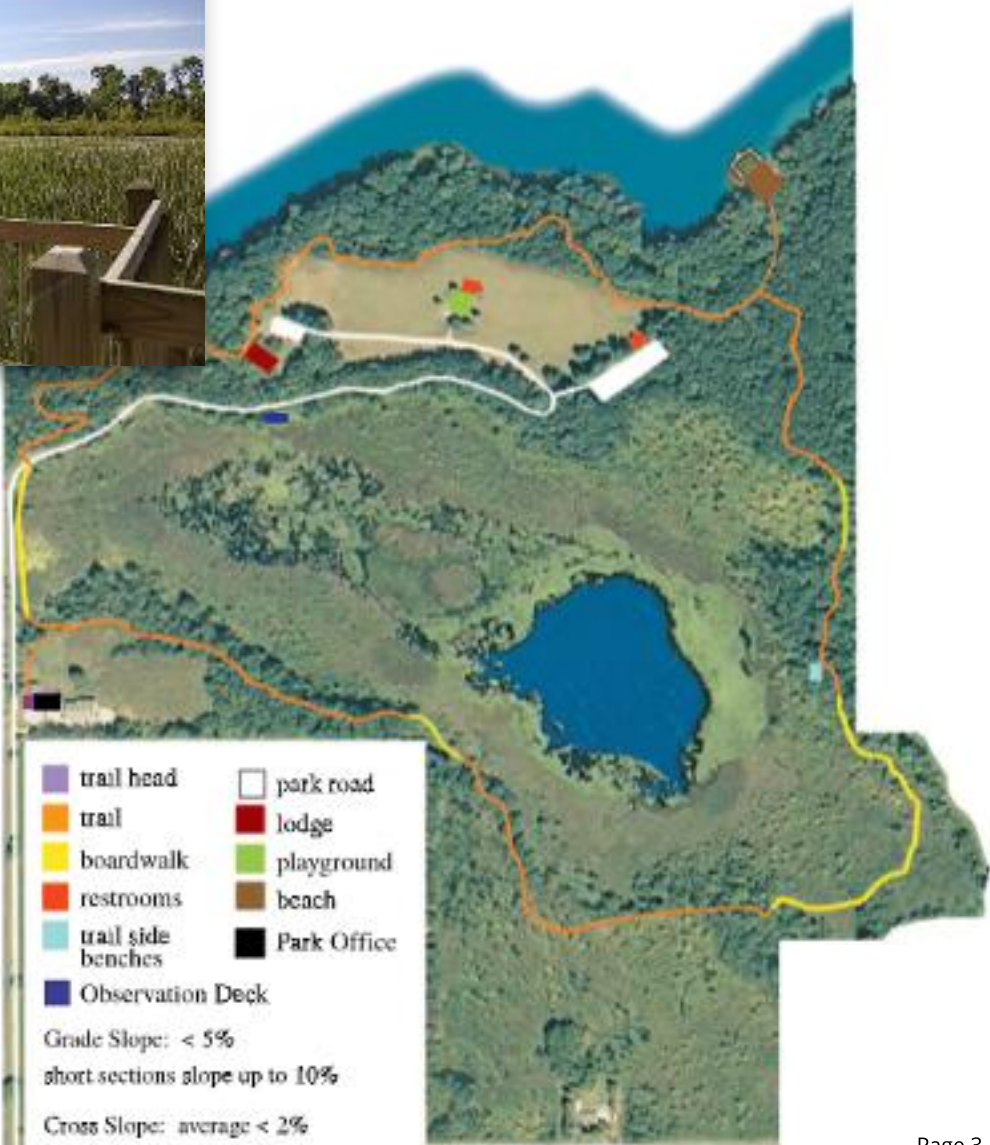


The property includes the Pond Lil Nature Preserve which is a dedicated State Nature Preserve.



Over 20 acres of land has been restored to prairie savanna which offers a colorful array of wildflowers during the summer months.

- On south shore of Dallas Lake
- Wetland observation deck for wildlife watching
- Nearly 2 mile loop accessible walking trail
- Beach - NO Lifeguards on duty
- Playground, picnic areas
- Lodge and pavilion are available for rental
- Admission \$5.00 per car
- Trailhead access is free
- Location of Park Department Office



David Rogers Memorial Park



2355 W 550 S Wolcottville



15 acres



Six relocated pioneer log buildings

The grave and memorial to pioneer philanthropist, Dr. David Rogers

1800's log barn is popular for rustic weddings



Delt Church Park



6455 S 200 W Wolcottville



110 acres



Next to the North Branch of Elkhart River



Three pavilions are available for reservation



The Mega Tower accessible playground has zones for ages 2-5 and 5-12



The area's only 18-Hole Disc Golf Course - Course map is also available on our website or UDisc.com



Multi-purpose looping 2 mile accessible trail - bicycles are permitted on wide trails

Restored prairie

Large open grass field

Multiple vault toilets available



Description of Hiking Trails

This looping accessible trail system offers wooded and prairie views. Trails are accessible, 6 foot wide, with compacted limestone fines and boardwalk surfaces.








1. Field Trail (Orange) 1.23 miles

Wander around the central hub of the park and wind through trees and restored prairies. Enjoy bird watching, looking for butterflies, or checking out the disc golf course.

2. Woods Trail (Lt Orange)

.77 mile

This shorter trail cuts through the woods entering and exiting over bridges. Another great opportunity for bird-watching or a peaceful stroll.

-  trailhead
-  bridge / boardwalk
-  bench/observation
-  pavilions
-  restrooms
-  Mega-Tower Playground
-  park road
-  Disc Golf Course Start



Trails — walk, run, hike



There are nearly 10 miles of accessible trails available within the LaGrange County Parks Department system.

Rules of the Trails

- **Walk our trails often**

Trails for walking, jogging, strollers, and wheelchairs. Bicycles are allowed on the wide trails at Delt Church Park. No horses or unauthorized motorized vehicles on trails. Stay on marked trails.

- **Horses must be tied to hitching rails**

- **Dogs must be on leash**

- **Take lots of pictures**

You may pick mushrooms, berries, and nuts. Please leave flowers and plants to grow. Leave no trace.

- **No alcohol on park property**

- **Trails are usable daily**

Winter Hours

Labor Day to April 30: 8 am - sunset.

Summer Hours

May 1 to Labor Day: 8 am - 9 pm



Delt



Dallas



Maple
Wood



Pine
Knob

Rental Facilities

Celebrate your event at one of our park venues.

- Graduations
- Reunions
- Meetings
- Weddings
- Weddings
- Bridal Shower
- Baby Shower
- Birthdays

Open-Air Pavilions

- Dallas Park
- Delt Church Park
- David Rogers Park

Air-Conditioned Buildings

- Dallas Park Lodge
- Maple Wood Nature Center
- Pine Knob Clubhouse

Reservations may be made up to one year in advance.

Contact the Park Office
to schedule.

260-854-2225

parks@lagrangecounty.org



Maple Wood Nature Center



4550 E 100 S LaGrange



132 acres



Northern hardwood forest, wooded swamp, and wet prairie. Enjoy walking trails among wildflowers, birds, and nearly 40 species of trees.

Maple Syrup Days: 3rd full weekend of March.

Perfect for public and school naturalist programs.

Trails are open daily.

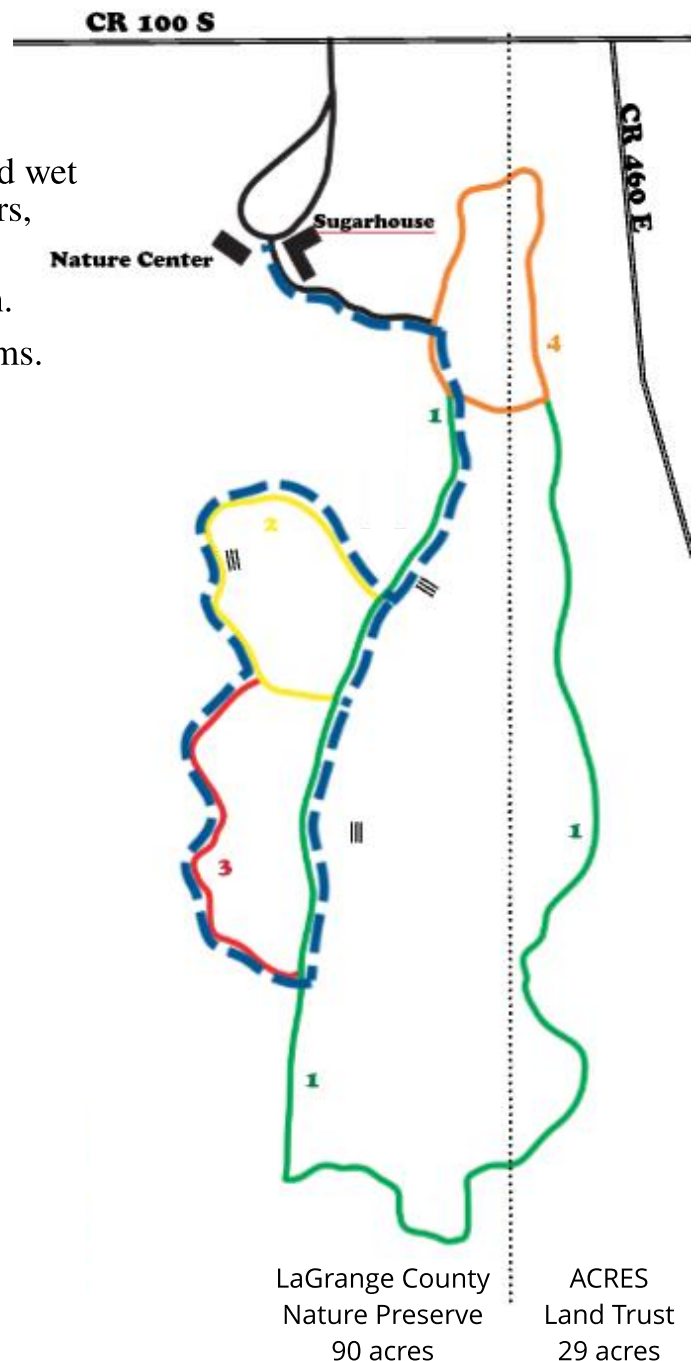
Nature Center hours:

Wednesdays 8 am - 4 pm

2nd Saturdays 9 am - 5 pm

other days by special appointment

260-463-4022



Description of Hiking Trails

1. ACRES Trail (Green) 1.3 miles MOD
Only the west side of the trail is ADA accessible.

2. Sugar Bush Trail (Yellow) .35 miles EASY
Great loop for spring wildflowers and wildlife. Look for signs of tapping on the Sugar Maples. ADA accessible

3. Extension Loop (Red) .25 miles EASY
ADA accessible

4. Trillium Trail (Orange) .4 miles EASY
This loop is a dirt and grass path through the woods. Secluded and quiet look at spring wildflowers and rising topography.

— — — Accessible

Pine Knob Park & Mike Metz Fen



2825 E SR 120 Howe



254 acres



Savanna, fen, marsh, woodland habitats



Meteer Lake has fishing dock and public access



Duff Lake has fishing dock



Archery targets and a wooded 3-D archery trail with life-sized game targets.



3-D Trail \$5 range fee.



Four miles of accessible loop trails: boardwalks and limestone paths



Meteer Lake at Pine Knob Park

& Mike Metz Fen

accessible trails

- orange trail 1.7 mile
- green trail .9 mile
- blue trail 1.7 mile
- boardwalk
- observation/rest station
- bridge
- fishing pier
- restrooms



Description of Hiking Trails

1. Archery Trail (Orange) 1.73 miles

This trail offers approximately 30 3-D animal targets for archery with 2 shooting/ observation towers. The restored prairie savanna, forest, Meteer Lake, and marshland offer a variety of plants and wildlife to enjoy throughout the year.

2. Marsh Trail (Green) .94 mile

A beautiful trail that is part of the Archery Trail. This is the shortest trail, great for a peaceful walk with limited time.

3. Trail (Lt Orange) alternate routes

4. Mike Metz Fen Trail (Blue) 1.9 miles

Seasonal views will include a variety of native wildflowers, birds, and butterflies. Wildlife is abundant. Fishing is allowed from the fishing pier on Duff Lake. Please enjoy this unique habitat, and the life it supports, by staying on designated trails.

Shipshewana Lake Park



3180 N 915 W



Quiet lakeside park



Playground

Shelter

Picnic Tables

Half mile from Pumpkinvine Trail

Beautiful sunset views



Beaches

No lifeguards on duty. Use at your own risk.

Summer Hours 8am-9pm

No dogs allowed on beaches

Alcoholic beverages are prohibited

Picnic tables available

Trash can and Port-o-John are available during summer season

Cedar Lake Beach 6890 N 315 E



Dallas Lake Beach 0505 W 700 S



Wall Lake Beach 6210 N 1170 E



Natural Areas

*dedicated State Nature Preserves

Duff Memorial Park

Cedar Lake - SW corner

Mike Metz Fen

Pine Knob Park

* Pond Lil Nature Preserve

Dallas Lake Park

* LaGrange County Nature Preserve

Maple Wood Nature Center



Mike Metz Fen at Pine Knob Park

Park Services and Programs

Year Round Recreation:

- Guided Nature Hikes / Walks
- Summer Day Camp
- Summer Swim Lessons
- Environmental Education
- Craft Classes
- Variety of Seasonal Programs

For up-to-date information.



Follow us!

@lagrangecountyparks

Or check our website!



www.lagrangecountyparks.org

Special Interpretive Programs

available with Park Naturalist

- School Field Trips
- In-School Programs
- Adult Programs

Annual Events

- Maple Syrup Days
Maple Wood Nature Center
Third full weekend in March
- "LaGrange County Connecting with Youth" Event
- Not-So-Spooky Family Halloween





Park Hours

8 am - Sunset

8 am - 9 pm May 1- Labor Day

**Alcoholic beverages are prohibited in all
LaGrange County Parks*

Park Office

0505 W 700 S

Wolcottville IN 46795

260-854-2225

www.lagrangecountyparks.org

parks@lagrangecounty.org

office hours: m-f 8 am - 12 noon

12:30 pm - 3:30 pm

Maple Wood Nature Center Hours

Wednesdays 8 am - 4 pm

2nd Saturdays 9 am - 5 pm

other days by special appointment



Duff Lake in Mike Metz Fen at Pine Knob Park

*To develop and maintain a system of parks that
preserves open space and natural areas, and
offers outdoor recreation opportunities to the public.*