



4 DAYS - 3 NIGHTS - 2 DESTINATIONS

BLENDING THE ANCIENT & MODERN WORLDS INTO ONE ITINERARY!

A NEW unique and engaging experience

Blending the ancient and modern worlds in one group tour itinerary.

A short hub & spoke concept that builds on culture, education, past and present.

South Bend, Indiana...Where You Can Bend Your Rules

Welcome to The Bend, a place to explore both the well known and the roads less traveled. The University of Notre Dame and St. Joseph River define this place but no matter how you choose to explore, this is a place to embrace life's simple pleasures. Try your luck in South Bend! From the Luck of the Irish, to having some luck at Four Winds Casino, to digging and finding luck in a dinosaur fossil, South Bend's treasures await your enjoyment.

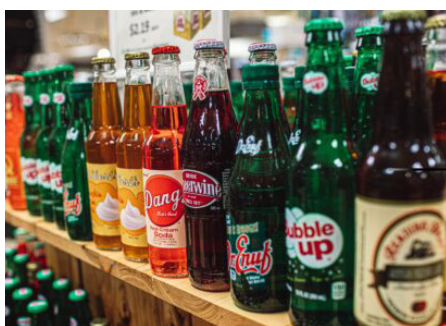
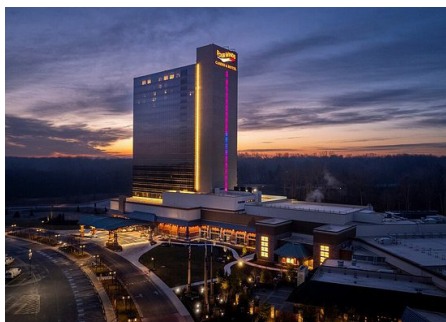
Shipshewana, Indiana...the Heart of Amish Country

Shipshewana is a one-of-a-kind destination to experience the simplicity of Amish culture, delicious foods and quality products they produce. Also enjoy quaint downtown shops, locally-produced meat and cheese, exciting outdoor recreation, world class entertainment and the Midwest's largest flea market.

GIGANTIC TO GENTLE PREHISTORIC TO PEACEFUL

BONES TO BUGGIES - A CULTURAL EDUCATIONAL EXPERIENCE TOUR





4 DAYS - 3 NIGHTS CUSTOMIZABLE SUGGESTED GROUP ITINERARY!

Day 1 - South Bend

- » **9:00-10:30 - Walking Tour of Notre Dame**
 - Visit the historic University of Notre Dame campus
 - View stunning architecture and landmarks like the Golden Dome and Basilica of the Sacred Heart
- » **11:00-11:45 - Lunch at South Bend Public House**
 - Grab a handcrafted burger, salad and or adult beverage
- » **12:00-3:00 - Tour Indiana Dinosaur Museum and South Bend Chocolate Factory**
 - Snack on bite-sized chocolate at the South Bend Chocolate Factory
 - Stroll through the ancient past at the Indiana Dinosaur Museum
- » **6:00-7:00 - Dinner at the Buffet at Four Winds Hotel & Casino**
- » **7:30 - Evening on your own**
 - Try your luck at the slots or relax in the pool

Day 2 - South Bend to Shipshewana

- » **10:00-11:30 - Studebaker National Museum and Oliver Mansion Tour**
 - Wander a 38-room mansion built in 1895 with all original furnishings
 - Walk through the historic Studebaker Museum to see antique cars on display
- » **11:45-12:45 - Lunch at Tippecanoe Place**
 - Dine in a 100-year-old mansion
 - Taste the history in every bite and plate
- » **12:45-1:45 - Travel to Shipshewana, Indiana**
- » **1:45-2:00 - Quick Break stop at Yoder Department Store**
 - Buy a gift, a snack, or something for yourself at Yoder Department Store
 - Find just what you're looking for at the three-in-one shopping center from apparel to hardware
- » **2:15-2:45 - Visit Riverbend Harness and Horseshoe Shop**
 - See Amish craftsmanship at its finest as you watch how buggy horses are outfitted to serve the Amish community



» **3:15-3:45 - Creekside Wheel Shop**

- Hear the history of an Amish crafter of buggy wheels
- Learn the intricacies of designing a wheel before it's sent off to a local buggy shop.

» **4:00-4:30 - Visit Hoosier Buggy Shop**

- Meet the master craftsman who builds the many buggies you'll see in town
- Walk through restored museum pieces and see just how each one is brought back to life

» **4:45-6:45 - Arrive at the Carriage House, an Amish Home Experience**

- Visit a family farmstead and eat an authentic Amish Thresher meal
- Get up close to majestic Clydesdale and buggy Dutch Harness horses.



Day 3 - Shipshewana

» **8:30 - Depart from Hotel**

» **8:45-10:00 - Arrive Teaberry Wood Products**

- Learn from an expert woodworker and make your own piece of art
- Tour the shop and see hand-crafted objects you won't see anywhere else

» **10:15-11:30 - Shopping time in Shipshewana**

- Shop the historic downtown district for a one-of-a-kind piece
- Leisurely stroll the charming streets and visit locally-owned stores



» **11:45-12:45 - E & S Bulk Food Store and Eash Sales**

- Shop "Where the Amish Shop" and stock up on food and supplies for the road
- Take home Amish noodles, jellies and jams, salsas and more



» **1:00-2:00 - Lunch at Ben's Pretzels**

- Make your very own soft pretzel with the owner of Ben's Pretzels
- Snack on delicious soft pretzels, pretzel dogs, and pretzel bites with your choice of dipping sauce

» **2:00-2:45 - Mervin Yoder's Historic Tractors**

- Witness a dog churning butter
- Walk through barns full of antique tractors and Amish bicycles

» **3:00-3:45 - Visit Glick's Place of Buggies and Antiques**

- Visit the Buggy Boneyard to see antique pieces of the past
- Snap a photo of each unique wagon, cart, buggy, and carriage

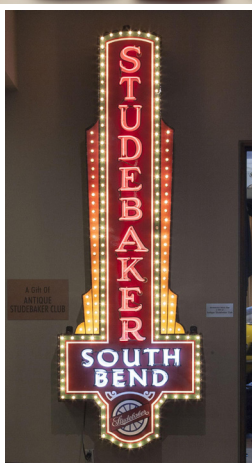


» **4:00-4:15 - Return to hotel then depart for The Blue Gate**

» **5:30-evening - Dinner and show at Blue Gate**

- Enjoy a home-cooked Amish meal at The Blue Gate Restaurant
- Sing and clap along to your favorite band at The Blue Gate Performing Arts Center





Trip Planning Tips for Groups

- Use a local step-on guide for all the inside scoop, history, folklore and make your tour the best and easiest experience for all.
- South Bend and Shipshewana are located one hour apart and are on Eastern Time Zone
- **Book your group-friendly hotel**
 - South Bend
 - Four Winds Casino Hotel
 - Embassy Suites
 - The Inn at Saint Mary's
 - Shipshewana
 - Blue Gate Garden Inn
 - Farmstead Inn
 - Van Buren Hotel
- Sundays are for adventures in South Bend while Shipshewana is closed as the culture practices a day of rest

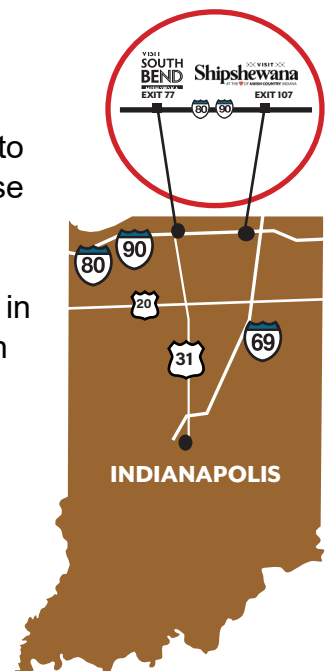
Shipshewana Pro tips:

- Book a group on Tuesday or Wednesday and enjoy the thrill of live auctions and bid on treasures at the **ABA Best of Best Flea Market!**
- Learn about the Amish and Mennonite culture at **Menno-Hof!**

South Bend Pro tips:

- While in downtown South Bend, make sure to check out the first artificial white-water course in North America called the **East Race!**
- If you are here in the winter, stop by **Ironworks Plaza** and test your driving skills in bumper cars on ice or your endurance on an Icebyk - a bicycle on ice!

Contact Judy McConnell or Nicole Lawler to customize an itinerary for a NEW unique and engaging experience!



Shipshewana VISIT
AT THE ♥ OF AMISH COUNTRY, INDIANA

Judy McConnell - Group Travel Manager
(260) 768-4008
judy@lagrangecountycvb.org
VisitShipshewana.org/groups

VISIT SOUTH BEND
MISHAWAKA

Nicole Lawler - Director of Engagement
(574) 400-4020
nlawler@visitsouthbend.com
VisitSouthBend.com/meetings-and-groups