





Travel Tips

- Shipshewana is in the Eastern Time Zone
- Take it slow! The pace around here is slower than what you might be used to.
- Horse-drawn buggies and bicyclists are very common and found on narrow backroads.
- The Shipshewana Flea Market is open seasonally from May through September on Tuesdays & Wednesdays.
- Grab tickets to a show at the Blue Gate Music Hall or Performing Arts Center. Check out the event calendar to see what is playing during your trip!
- Look out for Amish children heading to school!
- Enjoy Amish home-style cooking at the Blue Gate Restaurant & Bakery, Shipshewana Auction Restaurant, Tiffany's in Topeka, and Das Dutchman Essenhaus in Middlebury.
- In Shipshewana many businesses accept credit cards, but it's a good idea to carry cash! Smaller Amish-owned shops often only accept cash or check.
- There is an ATM at E&S Sales and various other places around town.

Roads Explained

- Shipshewana county roads can be a little confusing!
- The county roads are based on the distance in miles from US 20 and State Road 9 (SR 9)
  - The East & West roads are east and west of SR 9
  - The North & South roads are north and south of US 20
  - Example:
    - 200 North means 2 miles North of US 20, and 200 South is 2 miles South of US 20. Same applies to East to West of SR 9.


Learn more about Amish?

- Feel free to slow down and enjoy learning more about the Amish lifestyle by visiting **Menno-Hof Interpretive Center** located in the Heart of Amish Country, Indiana! Experience multi-image presentations, historical environments, and colorful displays that take you on a fascinating journey inside the unique world of the Amish and Mennonites.
- Hours
    - Monday-Saturday:
      - Tours available 10AM-3:45PM | Closes at 5pm
      - Please allow at least 1 hour + 15 minutes for your visit
      - Grab a FREE Coupon book from the Visitors Center for \$1 off one adult or \$2 off one family admission.

After 5 Activities

- While it's true that many of the local Amish close up shop at 5pm, it's not a problem in Shipshewana because there's always more to do in the Heart of Amish Country. We've compiled some lists and links below of things that are open or available past 5pm to make your schedule planning easier!
- Dining
    - Blue Gate Restaurant
    - El Zorrito
    - 5&20 Restaurant
    - East of Chicago Pizza
    - Wana Cup Restaurant
    - LaGrange "Restaurant Row"
      - Fireside Craft Burgers & Brew
      - Linder's Tavern on Main
      - Destination 814
      - Detroit Street Bar & Grill
  - Eats & Treats
    - Mom's Ice Cream
    - Howie's Ice Cream
    - Lucy's Vedic Twist
    - Shawna Rae's Bakery
    - Vanilla Bean Creamery
  - Outdoor Adventures
    - Canoe or Kayak one of LaGrange's 87 lakes and rivers
  - Enjoy the Pumpkinvine Nature Trail
  - Explore Off the Beaten Path
  - Discover new memories at LaGrange Parks

- Book a show or musical at Blue Gate Performing Arts Center or Music Hall



For a full list of events go to [Visitshipshewana.org](http://Visitshipshewana.org) or scan the QR Code.


Sunday Funday Adventures

- Sundays are rest days for the Amish community. Most of Shipshewana will be closed. Check out a list of things to do:
- Attractions
    - Hall of Heroes Super Hero Museum, Elkhart
    - Dixie Sternwheeler, North Webster (seasonal)
    - Linton's Enchanted Gardens, Elkhart
    - The Barns at Nappanee
    - Midwest Museum of American Art, Elkhart
    - RV Hall of Fame, Elkhart
    - Wellfield Botanic Gardens, Elkhart
  - Trails & Tours
    - Art in The Heart Trail
    - The Heritage Trail
    - The Quilt Garden Trail (seasonal)
    - Pumpkinvine Nature Trail
    - Indiana Foodways Culinary Trails
  - Outdoor Adventures
    - Canoe or Kayak one of LaGrange's 87 lakes and rivers
    - Enjoy the Pumpkinvine Nature Trail
    - Explore Off the Beaten Path
    - Discover new memories at LaGrange Parks



LaGrange County Parks


- The LaGrange County parks have many outdoor opportunities for you. Outdoor recreation, programs, environmental education, natural areas to explore, beaches to enjoy on hot summer days and so much more. Each park has distinct character and natural amenities. We encourage you to get out and play and bring your friends.
- CHOOSE ONE OF LAGRANGE COUNTY'S MANY PARKS!**
- Dallas Lake Park**
    - 140 acres on the South Shore
    - Sandy beach with a swimming pier
    - 1.75 mile accessible walking trail
    - Lodge & pavilion available to reserve
    - Playground for kids
    - Admission: \$1 per person for Dallas Lake Park Beach
  - Del Church Park**
    - 110 acres of woods, prairie and mowed grassy areas
    - MegaTower accessible playground
    - Picnic pavilions available to reserve
    - 18-hole disc golf course
    - 2 miles of accessible walking/biking trails
  - Maple Wood Nature Park**
    - 132 acre nature preserve
    - 2.3 miles of walking trails
    - Maple Syrup Days 3rd full weekend in March
    - Building available to reserve
  - Pine Knob Park**
    - 254 acres of oaks, pines, soft maples, prairie oak and more
    - A 3-D archery trail with life-size game targets
      - \$5 per archer
    - 4 miles of accessible walking trails
    - Clubhouse available to reserve
    - Accessible fishing piers on Meterer and Duff Lakes



For more information go to [LaGrange County Parks Website](http://LaGrange County Parks Website) or scan the QR Code

Upcoming Events

- January
  - Ice Festival & Chili Cookoff
- February
  - Pajama Day Sales
- March
  - Maple Syrup Days
- May
  - Shipshewana Flea Market (Tue/Wed.)
  - Mayfest
- June
  - Pumpkinvine Nature Trail Ride
- July
  - Topeka 4th of July Celebration
- August
  - LaGrange's Steam & Gas Show
- September
  - Blue Gate Bluegrass Week
  - Mongo's Pigeon River Fest
- October
  - Corn School
  - Fall Crafter's Fair
  - Howe's Fall Fest
- November
  - Wana Night Out
  - Lighting of Shipshewana
  - Shipshewana Lights of Joy
- December
  - Kid's Day with Santa
  - Chocolate Day
  - Gingerbread House Competition



For a full list of events go to [Visitshipshewana.org](http://Visitshipshewana.org) or scan the QR Code.

MIDDLEBURY

Eats & Treats

- Amish Dining:
  - Das Dutchman Essenhaus
- Casual Dining:
  - Danny's Diner
  - State & Main Tap & Table
  - Subway
  - The Hilltop
  - Wedgewood Brewing Company
  - West on Warren
- Treats:
  - Biggy Coffee
  - Dairy Queen Grill & Chill
  - Dips on the Vine

Places to Stay

- Das Dutchman Essenhaus Inn
- Hampton by Hilton
- Meadows Inn Bed & Breakfast

Things to do

- Explore the Pumpkinvine Nature Trail
- Discover Essenhaus's Shops
- Start the Quilt Garden Trail at the Krider Garden



LAGRANGE

Eats & Treats

- Casual Dining:
  - Destination 814
  - Fireside Craft Burgers & Brews
  - Linder's Tavern on Main
- Treats
  - Foltz Bakery
  - Lucy's Vedic Twist

Things to do:

- Discover Murals
- Maple Wood Nature Center
- LaGrange County 4-H Fairgrounds



WOLCOTTVILLE

Eats & Treats

- Casual Dining:
  - Coody Brown's Lakeside Grill
  - Twin Six

Things to do

- Cook's Bison Ranch



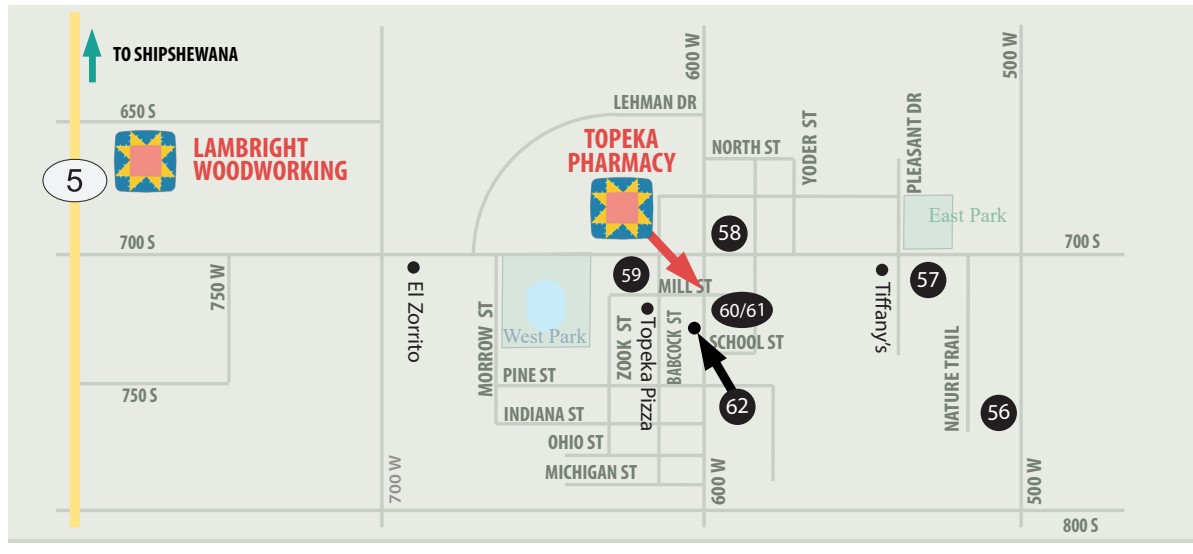
SHIPSHEWANA

Eats & Treats

- Amish Dining:
  - Blue Gate Restaurant & Bakery
  - Shipshewana Auction Restaurant
- Casual Dining:
  - 5 & 20 Restaurant
  - Country Corral Restaurant
  - Corn Crib Cafe
  - East of Chicago Pizza
  - El Zorrito 2
  - Red Bud Coffee Tea Cafe
  - Shawna Rae's Bakery & Cafe
  - The Black Sheep From Scratch Kitchen
  - Wana Cup Restaurant
- Treats
  - Amish Frozen Custard
  - Ben's Pretzels
  - Das Kaffee Haus
  - Jo Jo's Pretzels
  - Kitchen Cupboard
  - KuKui's Hawaiian Shaved Ice
  - Mom's Ice Cream
  - Shipshewana Popcorn Co.
  - Vanilla Bean Creamery

Places to Stay

- Blue Gate Garden Inn
- Der Ruh Blatz Motel
- Farmstead Inn
- Shipshewana Super 8
- Van Buren Hotel



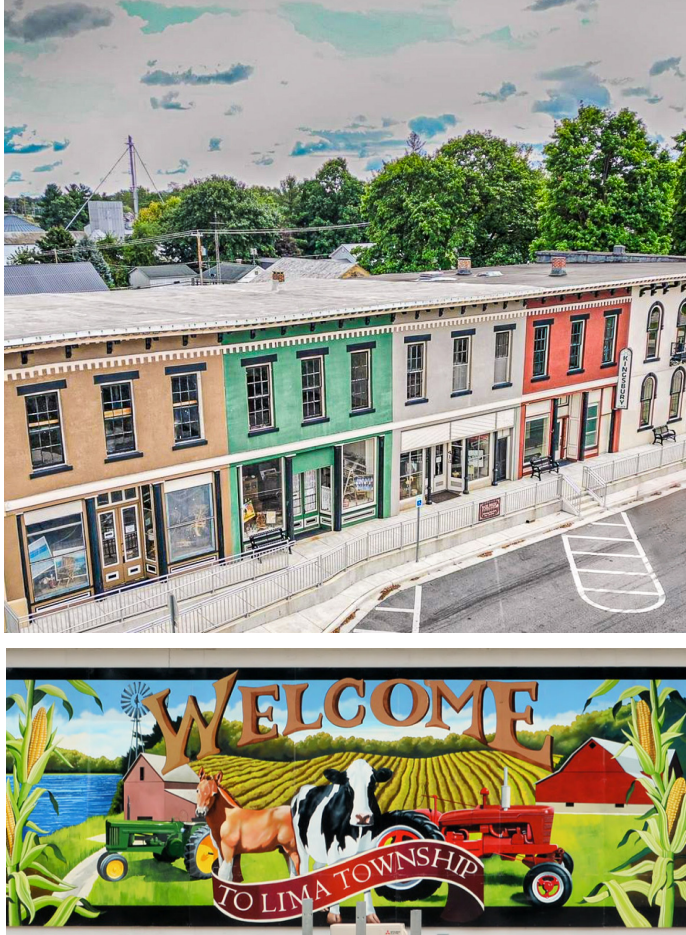
HOWE

Eats & Treats

- Casual Dining:
  - Howe Restaurant
  - Snappers Sports Bar
  - The Gathering Place
- Treats
  - Happiness is Ice Cream

Places to Stay

- Best Western Plus - Howe
- Patriot Inn
- Holiday Inn Express
- Super 8



TOPEKA

Eats & Treats

- Amish Dining
  - Tiffany's Restaurant
- Topeka Pizza
- Casual Dining
  - El Zorrito

About the Amish

The Amish and Mennonite communities are devout, and every aspect of daily life is tied to their faith. Their goal is to live simple lives that focus on their family and community. Mennonites lives are based on the same religious doctrine, but they are more lenient regarding appearance and modern technology.

The Amish choose to avoid most modern conveniences such as cars or phones and electricity inside their homes, although many now have phone booths outside their homes. Some Amish business owners use electricity inside their shops for things like card readers and registers, and some also use cell phones and computers in the running of their business, but all of these are kept separate from the Amish home.

Amish Cottage Shops

The brand-new Amish Cottage Shops Trail will take you to over 120 backroads Amish cottage shops!

Off the Beaten Path is where you'll find hidden jewels like the Amish Beekeeper-owned "B Honey" for all your honey-product needs. Or Silver Star, where you can find beautiful hand-crafted leather goods, or Owl Toy Craft for hand-made wooden toys.

Excited to get started? Below you'll find tips to remember while you're out and about:

- Most Amish businesses close at 5pm.
- All Amish and Mennonite businesses are closed on Sundays.
- Some Amish business owners only accept cash or check.
- Many Amish are fine with having their pictures taken if it doesn't show their face, but always ask first.
- Visit Menno-Hof Museum to learn about the Amish and their history.

NEW Audio Driving Tour

The New Off the Beaten Path Audio Tour is a curated experience filled with narration to guide you through the scenic countryside of LaGrange County to see **working farms, small towns, and Amish communities**. The tour will bring local history, stories, and folklore right inside your car. You'll laugh at stories of the famous **Howe Skunk Lady**, and be amazed to hear about **Chief Shipshewana**, and so much more! It's available via streaming! Contact the Official Amish Country Visitors Center for more information.

Driving Tips

- Understand the Grid! Road names and numbers can be confusing. Road names are based on the distance in miles from US 20 and State Road 9 (SR 9):
  - The East & West roads are east and west of SR 9. The North & South roads are north and south of US 20.
- Use a Map! Make sure and get a printed map and assign a navigator to help enhance the experience.
- Take it Slow! Watch for buggies, pedestrians and bicyclists on the roads. Some roads are bumpier than others and may be gravel, all of which require slower driving, but add to the cultural experience.
- Stop and enjoy! You'll pass by LOTS of great roadside stands, Amish Cottage shops and Barn Quilts, perfect for an Amish Country Adventure. Feel free to stop and re-start the audio anytime, even extending it over several days, so you can really enjoy.
- Do the speed limit! The audio tour is timed for you to follow the speed limit and with no buggies on the road. You might find you are ahead or behind the narrator, especially if you get behind a buggy or bike, but don't get frustrated. Simply pause the recording until you get to the next turn and catch up.
- Plan! Store hours in Amish Country may vary. Amish-owned businesses have limited hours, are closed after 5 and are closed on Sunday for them to be with their family.

Visitors Center

Thousands of visitors choose to explore the area using both guided and self-guided tours and trails, such as the Off the Beaten Path Trail, the Barn Quilt Trail, the Pumpkinvine Bike & Hiking Trail, or the new Art Trail Brochure that will lead you to all the local murals and sculptures.

Always start your visit by stopping by the Visitors Center, located at 350 S Van Buren St. in Shipshewana! You'll find knowledgeable staff, coupon books, and answers to all your questions. You'll also be able to pick up a copy of the latest Visitors Guide!

- Receive tips & referrals
- Pick up the FREE Off the Beaten Path Audio Driving Tour
- Ask about new adventures and trails
- Pick up a FREE Coupon Book

Stay up to date on our socials!



What is a Barn Quilt?

LaGrange County's newly expanded Barn Quilt Trail can now lead you to over 80 different Barn Quilts!

Similar in design to traditional quilts, Barn Quilts are constructed using wood and painted with heirloom or newly designed quilt patterns chosen by the owner or artist. They are either a geometric pattern or a geometric pattern with an image in the center, such as a flower or horse. There are various sizes available, and the size chosen is determined by the size of the location where it will be displayed and how large it will need to be to be easily visible to passers-by. Barn Quilts adorn historic barns, family homesteads, Amish farms, and public spaces.

The Barn Quilt history began nearly 300 years ago in central regions of Europe, and the tradition traveled here with early immigrants. They were quite common among the Pennsylvania Dutch, not only as expressions of family and place, but additionally they served as points of navigation for travelers.

Many Barn Quilt patterns tell stories about the family, history, and culture of the area. These prominently displayed, colorful designs are remarkable combinations of traditional art, history, and familial connection. Visitors love to seek out these wonders of classic woodcraft that continue a centuries- old public art tradition.


Today, quilters from around the world who travel to Shipshewana greatly enjoy finding their favorite patterns brought to life in different forms.



Bringing Barn Quilts to Life



The expansion of the number of Barn Quilts in LaGrange County is led by local artist Karen Weiland. When someone applies for a Barn Quilt, Karen meets with them to determine location, size, pattern, and colors, and then Karen creates the piece in her home studio. The process requires exterior primer, painter's tape, exterior latex paint in various colors, and small rollers or brushes. Karen recommends two coats of primer and three coats of latex paint (allow each layer to fully dry before applying another) to make your Barn Quilt bright and lasting. Karen custom makes Barn Quilts ask the Visitors Center how to customize your own!



## Off the Beaten Path

120 Amish Cottage Shops  
80+ Barn Quilts  
Audio Driving Tour

